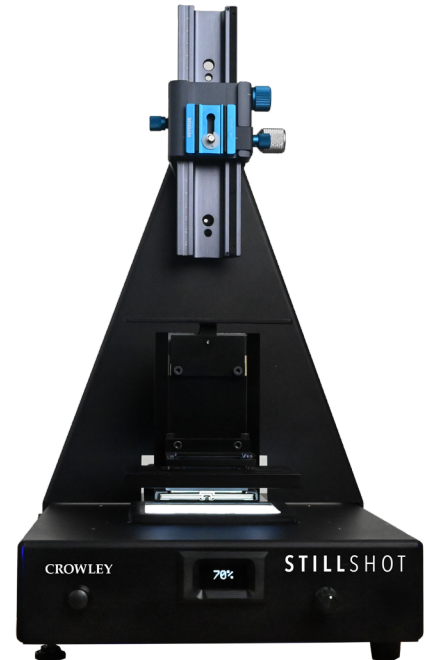


# StillShot

## FLEXIBLE. PORTABLE. DURABLE.

Utilized for over a decade in Crowley's Digitization Service Bureau, the Crowley Film Copy Stand, StillShot, is a reliable and adaptable solution crafted to cater to the requirements of archival film digitization. Boasting a sturdy build, user-friendly design, and advanced features, this copy stand delivers stability and flexibility for capturing images of exceptional quality. Utilize your preferred camera, macro lens, and software to capture mounted 35 mm slides, 35 mm strip film, medium format frames and film strips up to 6 x 8 inches.



Shown with 35 mm film mount

## KEY FEATURES

### Modular Design

Modular components allow for enhanced customization and adaptability to different imaging setups. Users can configure the stand to meet specific project requirements.

### Archival Light Source

High quality remote phosphor light is kept separate from film to reduce risks associated with temperature sensitive films.

### Quick Release Camera Plate

The quick-release plate facilitates fast and secure camera attachment and removal.

### Portable

A compact and collapsible design allows for easy storage and transportation. Lightweight construction ensures portability without compromising stability.

### Compatibility

Designed with a standard Arca-type mount to accommodate a wide range of cameras, including medium format bodies, DSLR's and mirrorless cameras.

### Sturdy Construction

Built with high-quality aluminum for durability and stability, ensures compatibility with a wide range of cameras and equipment.

### Vibration Dampening

Built-in vibration dampening features minimize vibrations and ensures stable imaging, particularly during long exposures.

### Micro-Adjustment Controls

Micro-adjustment controls allow for precise alignment, focus and lighting. This ensures optimal image capture in archival digitization workflows.

### Adjustable Height

An adjustable height column allows for the precise positioning of the camera relative to film.

“The Crowley StillShot is sturdy and easy to use. Each of the three film holders has a clever design and can get the film to lay completely flat while not having anything on top of it, which is perfect when digitizing to customer standards.”

~ Allison Cook, Crowley Digitization Services Project Manager (Photographs)



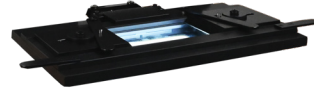
## FILM MOUNTS



35 mm film strips



35 mm slides



Medium format film strips

\*Price varies based on film mount selected

## TECHNICAL SPECIFICATIONS

<b>Dimensions (LxWxH)</b>	Base unit only: 12 x 10 x 16.75 inches (304.8 x 254 x 425.45 mm)
<b>Weight</b>	Base unit only: 6 lbs/3 kg
<b>Lighting</b>	Remote phosphor light source, 96 CRI
<b>Camera support</b>	Arca-type clamp with focusing rail
<b>Camera mount</b>	1/4 inch thread
<b>Focus Adjustment</b>	Automatic and manual
<b>Software</b>	Customers preferred software
<b>Compatible Film Types</b>	Mounted 35 mm slides, 35 mm strip film, medium format frames and strips up to 6 x 8 inches
<b>Standard Features</b>	(1) Crowley StillShot base unit; (1) Quick release camera plate; (1) Focusing rail
<b>Power requirements</b>	110 - 240 V 50/60 Hz; 220 W max
<b>Camera options</b>	Accommodates wide range, including medium format, DSLR's and mirrorless



Fully equipped version