



Maximum
performance with
100% reliability

OS C

Perfection at top speed.

Digitise efficiently: The OS C sets new standards

Do you need a device that handles large digitisation projects with maximum efficiency for both A2 and A1 formats? With the latest technical upgrade to the scanner technology that has proven itself countless times, we are committed to delivering consistently high image quality, efficient workflow, and exceptionally easy operation.

The advantages at a glance

Continuous image quality with a high certainty of results

With the OS C, you achieve high-quality results in accordance with the Metamorfoze Light, FADGI 3*, and ISO 19264 Level B quality standards. The completely redesigned camera, featuring a CMOS line sensor and a high-precision lens, delivers a significant increase in measurable resolution, resulting in greater detail and uniformity in the image. The CRI95+ LED lighting, tuned to the sensor's spectral response, works in conjunction with the software to deliver further improved tonal and colour reproduction. The software's image processing is now handled by the proven Zeutschel G1 workflow, familiar from the OS Q/HQ, ScanStudio, and OS A systems. The system is complemented by a new motor control system that enables even smoother and quieter operation of the scan head drive, thereby contributing to consistently high image quality.

Automatic quality control with OmniScan 12 and OS QM Tool

With the OS QM Tool quality analysis software, you can reliably verify that the test chart results comply with the requirements of ISO 19264-1 as well as guidelines such as Metamorfoze or FADGI. In combination with the Object Level Target, which is placed directly next to the originals, and the interface between OmniScan 12 and the OS QM Tool, consistent and traceable quality assurance is ensured.

Short scan times for efficient work

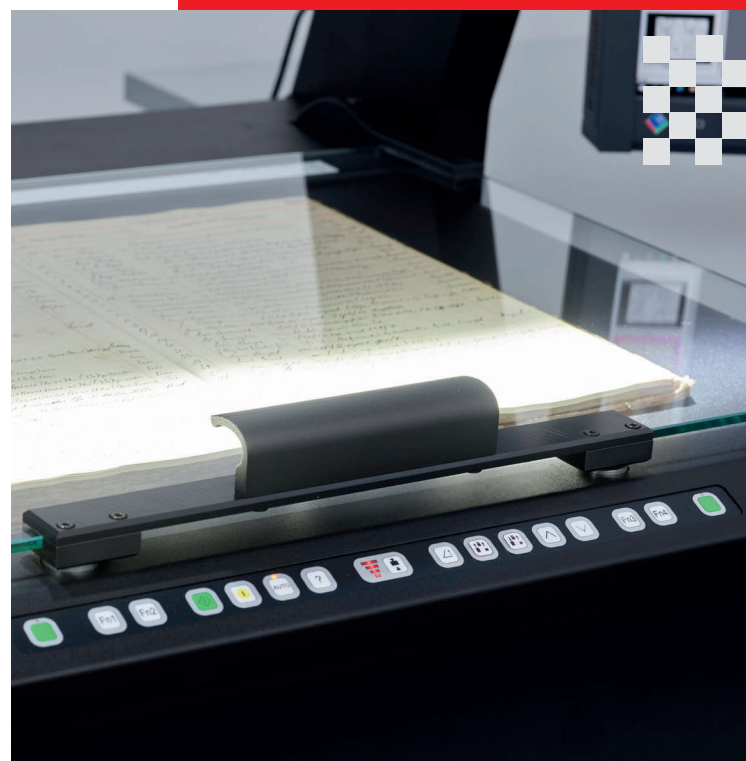
The significant acceleration of the scanning process — achieved through an adjustable line period reduced to as little as 400 μ s — along with the new camera electronics and sensor featuring faster data transfer via a 10 GigE Vision interface, now allows you to complete

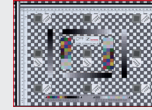
projects much more quickly. In addition, the scanning software guides the user simply and efficiently through the entire image processing process. Field-proven book cradles with improved mounts and glass plates support automated workflows.

Easy to use and ergonomic work

The OmniScan 12 software has proven to help scan operators easily and efficiently through the entire process of image processing from capture through image optimisation up to the result of various output formats.

Zeutschel's exclusive lighting system is only activated during the scanning process to keep light exposure to a minimum.





Compliant to

ISO 19264-1
FADGI
Metamorfoze



Developed for a long service life

In our production process, we prioritise quality and sustainability. For example, we have deliberately avoided the use of plastic in the OS C. The scanner and book cradles are made of recyclable metals and are perfectly designed to work together.

In addition, the system is available not only as a new unit but also as an upgrade for existing first-generation OS C systems. All of this ensures a long service life.

Made in Germany

Sustainable materials



Technical data	OS C2 Comfort	OS C2 Advanced	OS C2 Advanced Plus	OS C1
Scan area	A2 635 x 460 mm		A1 845 x 630 mm	
Scan mode	Colour			
True color processing	48 bit colour I output 48 bit colour, 16 bit grey scale I output 16 bit gray scale, 1 bit b/w I output 1 bit b/w			
Max. resolution	600 ppi			
Scan speed	3,8 sec. / 400 ppi		3,8 sec. / 300 ppi	
Auto focus	approx. 50 mm		ca. 50 mm	
User software	mind. OmniScan OS 12.14 (64 bit), with multithread-function (optional)			
Book cradle	Manual comfort book holder	Advanced version with glass plate, opening angle adjustable up to 90°; automatic opening of glass plate after scanning, book plates spring-loaded and electrically lockable	Advanced Plus version with motorised glass plate, opening angle adjustable up to 90°, electrically adjustable book plates, adjustable and controlled contact pressure, automatic opening of the glass plate after scanning	Advanced version with electrical controlled glass plate, opening angle adjustable up to 90°; automatic opening of glass plate after scanning
Working mode	automatic			
Max. book thickness	100 mm	100 mm with glass plate 150 mm without glass plate	150 mm with glass plate 200 mm without glass plate	120 mm with glass plate, 170 mm without glass plate
Scanner interface	10 Gig E Vision			
Data output	all the standard image formats, for example TIFF uncompressed, TIFF G4, JPEG, JP2, Multipage TIFF, PDF, Multipage PDF, BMP, PNG, GIF, PCX			
Accessories (optional)	PC, monitor, lockable scanner table, different book holders, Kit 90°			
Dimensions (w x d x h)	805 x 742 x 1170 mm	856 x 804 x 1216 mm	916 x 761 x 1278 mm	1150 x 1023 x 1573
Footprint	805 x 717 mm	856 x 750 mm	916 x 762 mm	1030 x 880 mm
Weight	78 kg	112 kg	120 kg	142 kg
Power supply	110-230 V, 50/60 Hz, 1,1-2,4 A			
Compliant with the standards:	ISO 19264-1 (Level B) up to 400 ppi (C2) & 300 ppi (C1) / Metamorfoze Light / FADGI 3*			
Approvals	CB testing in accordance with IEC 62368-1:2018 including GROUP AND NATIONAL DIFFERENCES for EN IEC 62368-1:2020+A11:2020 and U.S.A. And CANADA have been checked. And NATIONAL DIFFERENCES for CSA/UL 62368-1:2019			

Subject to technical changes