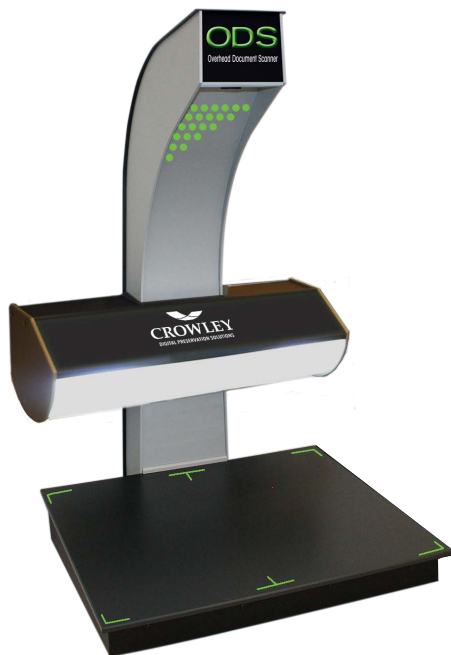


ODS OVERHEAD DOCUMENT SCANNER

THE OVERHEAD DIGITAL COPIER THAT OFFERS MORE FOR LESS



A3+

Designed for walk-up users (students, patrons, researchers, staff and others), the Crowley ODS offers scanning simplicity.

The straightforward interface facilitates usability for all experience levels. The 8 mm wide-angle lens and cool LED lighting ensure quality scans with no warm-up time.

- Flat documents
- Bound books
- Spiral notebooks
- Lab books
- Binders
- Photographs
- Graphic arts and more



Access to the Crowley ODS scanner will not only be an incredible asset to our organization and patrons, but also to broader preservation efforts in our county."



~ Maria Sholtis, Uniontown Public Library

KEY FEATURES

- **Calibrated active pixel sensor array**
- **Voice recognition** allows users to initiate scanning through voice commands
- **Elective motion-activated capture technology**
- **Live capture mode** for real-time on-screen viewing
- **Automatic book curve correction**
- **Versatile interface option:** delivers with or without All-In-One (AIO) PC
- **Energy-saving automatic sleep mode**
- **Automatic user video tutorials**
- **Easy editing features** such as auto-deskew, multi-crop and annotation
- **Cool LED light source** for uniform and gentle illumination
- The Crowley ODS offers **multiple output and file format options** for increased flexibility, see back for details.
- **OCR software and payment interface options**
- **Multi-lingual user menu**



BENEFITS

- **Cost savings.** Digital saving and sharing options reduce the need for costly consumables such as paper and toner. Optional payment interface allows institutions to regain initial investment.
- **Protect originals.** The overhead design protects book bindings which can be damaged when using traditional flatbed scanners
- **Large scanning bed.** The Crowley ODS scans materials up to A3+*
- **Portability.** Simple hardware design allows the Crowley ODS to be easily disassembled and transported. The economic scanner size easily fits most standard furniture.
- **Minimal staff intervention.** Built-in instructional and help menus allow users to operate the unit without detailed instruction from staff
- **Fast scans.** The Crowley ODS captures images in less than half a second, quicker than the industry standard

SIMPLE INSTALLATION

1. Connect the scan tower and scan bed
2. Connect the PC
3. Plug into a power source
4. Scan



TECHNICAL SPECIFICATIONS

Max. Scan Area*	20.4 x 16.5 in / 510 x 420 mm (A3+) Scans materials up to 4 in / 100 mm deep	
Lens	8 mm wide-angle lens	
Capture Mode	Color; grayscale; black and white	
Capture Time	<0.5 second	
Output Resolution	100-600+ dpi	
Output Options	USB; email; cloud; network; printer	
File Formats	PDF; PDF multi-page; TIFF; TIFF multi-page; JPEG; JPEG 2000; BMP; GIF; PNG	
USB Output	Two or four USB ports based on PC option	
Scanner Options	Delivers with or without All-In-One (AIO) PC Payment interface Optical Character Recognition (OCR)	
Light Source	Wide-angle cool LED lights to ensure full scan area illumination	
Security	Integrated Kensington lock slot	
Interface	USB 3.0	
Operating System	Windows 10 Pro (64-bit only with Intel Processor) Visit www.thecrowleycompany.com for full PC specs.	
Power	50-60 Hz; 90-240 V; 120 W	
Scanner Dimensions**	Length	21 in / 550 mm
	Width	21 in / 550 mm
	Height	34 in / 855 mm
	Weight	38 lbs / 17 kg

**PC dimensions available on www.thecrowleycompany.com



DIGITIZATION PRODUCTS



DIGITIZATION SERVICES



SUPPORT SERVICES

www.thecrowleycompany.com | 240.215.0224 US Corporate

Join Us! @crowleyscans

