



Excellent digitization  
begins with a suitable  
copyboard system

**Copyboard  
systems**

**Modular and convenient.**

## Modular and convenient for microfilm cameras and book scanners

For digitisation or analog storage of sensitive and often irreplaceable cultural assets, a technically-sophisticated scan and microfilm system is needed which should be as easy as possible to use.

Excellent long-term storage begins with a compatible copyboard system. For this reason, for practically every piece of equipment – whether book scanners or microfilm cameras – Zeutschel offers its users compatible modular copyboard systems.

We at Zeutschel have been dealing in development and construction of our copyboard systems (book cradles with or without a motor, with or without a glass place; top or backlight tables) for more than 60 years with the same care as the development of our scanners, our software or our microfilm cameras.

As a result, you can expect the same maximum of operating comfort from the copyboard systems we have listed here and be assured that your valuable books and other documents will be treated in the exact same careful manner.

For simple, ergonomic and fatigue-free operation we have incorporated into our systems: ample leg room, height adjustment, a safe opening mechanism and a solid foot switch, for example.

You may depend on original Zeutschel quality even with copyboard systems.

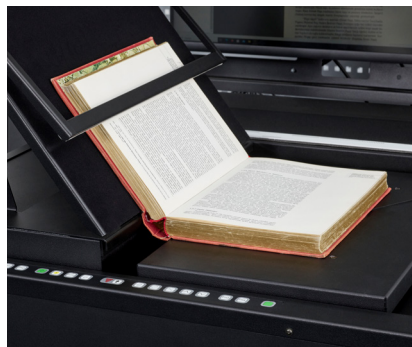
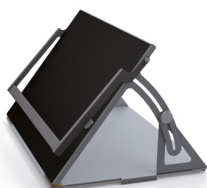
Copyboard systems	Scanners/copiers														
	OS Q - Serie			OS HQ	ScanStudio			OS 15000		zeta		chrome	OS C2		OS C1
	OS Q2	OS Q1	OS Q0	OS HQ	A2	A1	A0	Comfort	Advanced/Advanced Plus	Basis	Comfort		Advanced	Advanced Plus	
OT 180 H 35 XL700		•	•	•		•	•								
OT 180 H A0			•	•			•*								
OT 180		•	•	•											
OT 180 H		•	•	•											
OT 180 H 90°		•	•	•											
OT 180 H 50 XL		•	•	•		•	•								
OT 90		•	•	•		•	•								
ZT		•	•	•			•								
AT 1		•	•	•		•	•								
AT 0			•	•											
ATO 800/350 XL							•								
DT 0			•	•											
DT2						•	•								
Book cradle A2	•				•										
LED light box A2					•										
Vacuum Table A0			•	•											
Vacuum Table A1		•	•	•		•	•								
Book holder 140°-90°	•	•	•	•	•	•	•	•	•	•	•	•	•	•	•
Kit 90°*	•	•	•	•	•	•	•		•			•	•	•	
V-Kit								•	•	•	•	•	•	•	•

\*Format limited to max. 1130 x 850 mm (lense 60 mm)



## Book holders A2 140°–90°

- For scanning of books, that may not be opened more than 90°–140°
- can be used on both sides



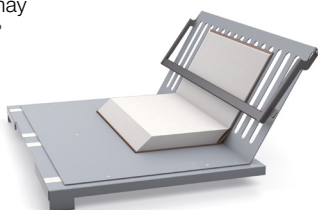
## Book holders A1 140°–90°

- For scanning of books, that may not be opened more than 90°–140°
- can be used on both sides



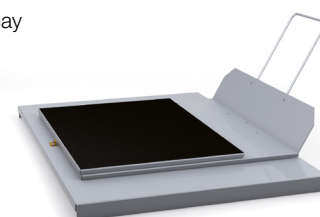
## Kit 90° A2

- For scanning of books, that may not be opened more than 90°
- for front edge system



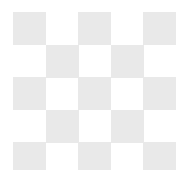
## Kit 90° A1

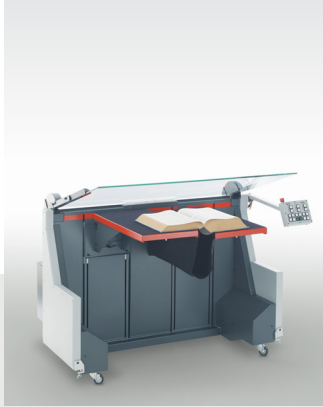
- For scanning of books, that may not be opened more than 90°
- for front edge system



## V-Kit

V-book holder for particularly gentle and value-preserving scanning





## OT 180 H 50 XL

**Motorised book cradle with self-opening glass plate**

- copyboard system with book cradle for careful handling of books
- self-opening glass plate with adjustable opening angle, adjustable up to 115°
- sufficient leg room for comfortable and economically correct working position
- exchangeable book plates
- 2 foot pedal for comfortable opening and closing of the glass plate and for raising and lowering the book cradle
- ergonomic positioning of the control panel (swivel arm)
- constant contact pressure continuously adjustable, independent of the book weight
- sliding, self-balancing book support plates
- easy turning of large pages, limitation for lowering for small books
- semi-automatic working
- parallel application and lowering of the books to avoid damage to the sides when opening the glass plate
- automatic lowering after capture
- thanks to open sides, the original document can be larger than the scanning surface

### Technical specifications

Max. book size, opened:  
1025 × 610 mm  
Max. book weight: 40 kg  
Max. book thickness: 500 mm  
Working height: 800 mm  
Electr. connection:  
230 V, 50/60 Hz, 500 W,  
other voltages on request  
w × d × h: 1180 × 780 × 800 mm



## OT 180 H 35 XL700

**Motorised book cradle with self-opening glass plate**

- copyboard system with book cradle for careful handling of books
- self-opening glass plate with adjustable opening angle, adjustable up to 115°
- sufficient leg room for comfortable and economically correct working position
- 2 foot pedal for comfortable opening and closing of the glass plate and for raising and lowering the book cradle
- ergonomic positioning of the control panel (swivel arm)
- constant contact pressure continuously adjustable, independent of the book weight
- sliding, self-balancing book support plates
- easy turning of large pages, limitation for lowering for small books
- semi-automatic working
- parallel application and lowering of the books to avoid damage to the sides when opening the glass plate
- automatic lowering after capture
- thanks to open sides, the original document can be larger than the scanning surface

### Technical specifications

Max. book size, opened:  
1025 × 700 mm  
Max. book weight: 40 kg  
Max. book thickness: 350 mm  
Working height: 800 mm  
Electr. connection:  
230 V, 50/60 Hz, 500 W,  
other voltages on request  
w × d × h: 1180 × 780 × 800 mm



## OT 180 H 90°

**Book cradle with swivel-mounted glass plate**

- book cradle with swivel-mounted glass plate for scanning without glass plate (larger opening angle)
- Optional with:
- automatic GP 0°/90° detection on PC
  - 71 mm increase to 860 mm
  - USB interface integrated into book cradle

### Technical specifications

Max. book size, opened:  
1025 × 620 mm  
(special model: 1025 × 700 mm)  
Max. book weight: 20 kg  
Max. book thickness: 240 mm  
Working height: 800 mm  
Electr. connection:  
230 V, 50/60 Hz, 150 W,  
other voltages on request  
w × d × h: 1180 × 723 × 800 mm



## OT 180 H A0

**Motorised book cradle with self-opening glass plate**

- copyboard system with book cradle for careful handling of books
- self-opening glass plate
- the book is opened 180° and pressed against the glass plate from below
- continuously adjustable contact pressure
- easy turning of large pages, sufficient leg room for fast and comfortable operation using foot pedal
- automatic lowering after capture, opening angle of glass plate 48°

### Technical specifications

Max. book size, opened:  
1350 × 960 mm  
Max. book weight:  
22 kg, optional 40 kg  
Max. book thickness: 220 mm  
Working height: 860 mm  
Electr. connection:  
230 V, 50/60 Hz, 150 W,  
other voltages on request  
w × d × h: 1520 × 1060 × 860 mm





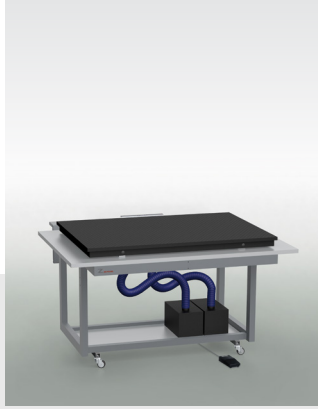
## ZT

### Newspaper table with horizontally moveable table plate

- newspaper table with rail-guided, horizontally moveable table plate
- easily adjustable locks
- automatic release of capture on request
- suitable for capture of single newspaper pages

#### Technical specifications

Max. scan format, opened:  
906 × 640 mm  
(special model: 1000 × 700 mm)  
Working height: 800 mm  
w × d × h: 1180 × 723 × 697 mm



## Vakuumtisch A0

### Copyboard table for flat originals

- copyboard table for single-sheet originals
- sturdy tubular steel construction on wheels
- continuously adjustable suction capacity

#### Technical specifications

Max. suction capacity: 270 l/min  
Max. scan format: 877 × 1227 mm  
Working height: 900 mm  
Electr. connection: 110–230 V,  
other voltages on request  
w × d × h: 1550 × 1200 × 900 mm



## AT 0 800/350 XL

### with glass plate, for ScanStudio

- 2 working heights

#### Technical specifications

Max. scan format: 1190 × 895 mm  
Working height: 800 mm  
w × d × h: 1530 × 1270 × 845 mm

Max. scan format: 1440 × 927 mm  
Working height: 350 mm  
w × d × h: 1530 × 1270 × 845 mm



## DT 0

### Backlight table for opaque and transparent originals

- backlight table for opaque and transparent originals (e.g. technical drawings, geographic maps)
- optimum contrast and perfect density through uniform cold-light illumination
- continuously adjustable light intensity
- simple operation
- moveable, clearly-marked guide bar
- comfortable operation when sitting due to sufficient legroom
- vacuum system to hold down rolled or folded originals on request

#### Technical specifications

Max. scan format:  
1350 × 960 mm  
Working height: 800 mm  
Electr. connection:  
230 V, 50/60 Hz, 85 W,  
other voltages on request  
w × d × h: 1600 × 1100 × 800 mm  
The DT 0 is also available  
without glass plate



## AT 1

### Top light table for opaque originals

- camera table for opaque originals (e.g. technical drawings, geographic maps)
- sturdy tubular steel construction

#### Technical specifications

Max. scan format, opened:  
1070 × 675 mm  
Working height: 800 mm  
w × d × h: 1180 × 723 × 800 mm  
The AT 1 is also available  
with glass plate



## AT 0

### Top light table for opaque originals

- camera table for opaque originals (e.g. technical drawings, geographic maps)
- sturdy tubular steel construction

#### Technical specifications

Max. scan format:  
350 × 960 mm  
Working height: 800 mm  
w × d × h: 1350 × 960 × 800 mm  
The AT 0 is also available  
with glass plate



240.215.0224 U.S.

[www.thecrowleycompany.com](http://www.thecrowleycompany.com)

Join Us! @crowleyscans

