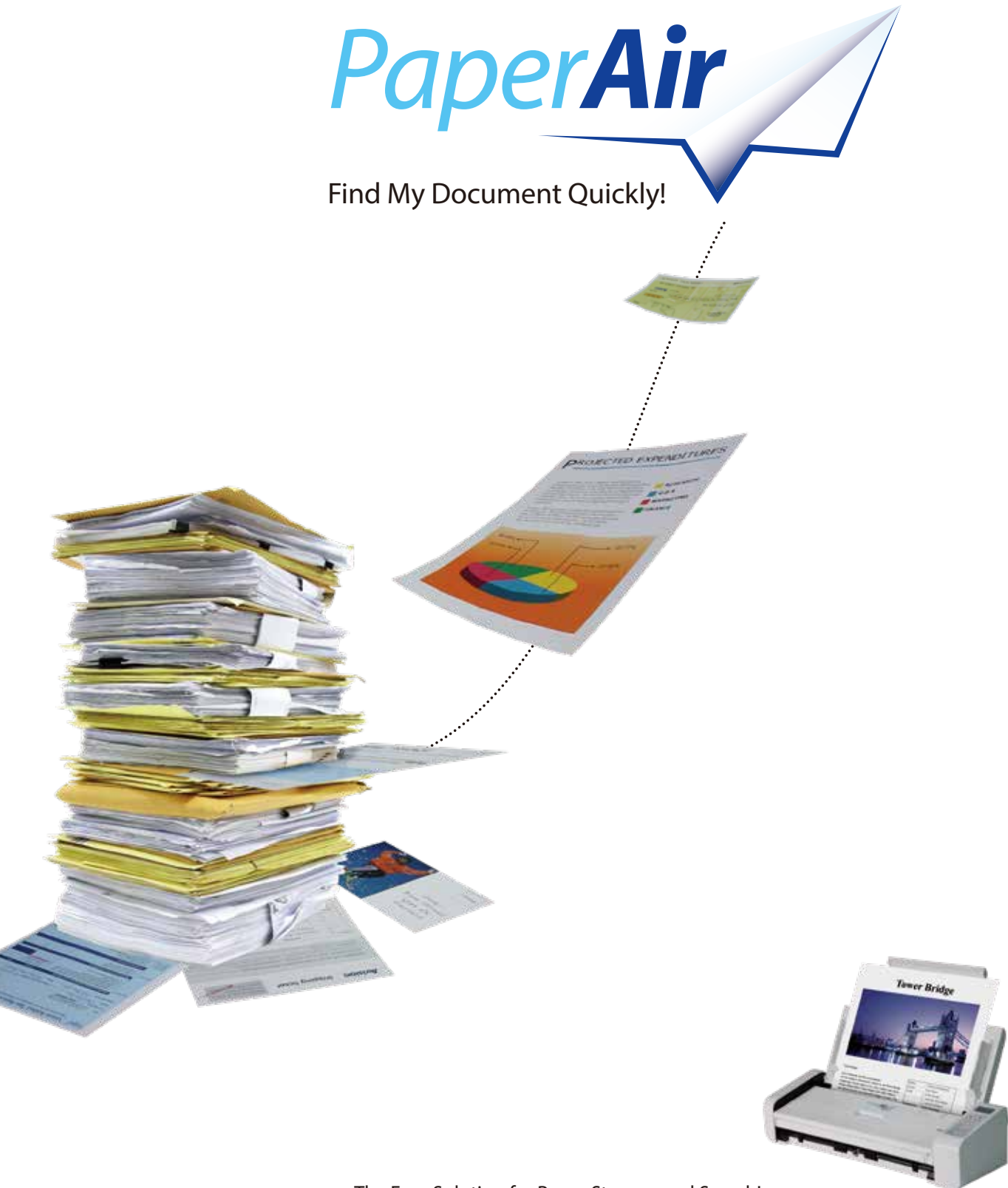


PaperAir 215/ PaperAir 215L

PaperAir

Find My Document Quickly!



The Easy Solution for Paper Storage and Search!

Avision



Kid's Art



Important Document



Treasured Photos



Family Reciped



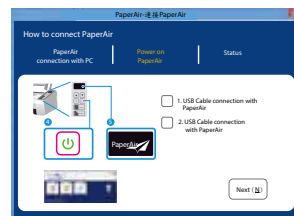
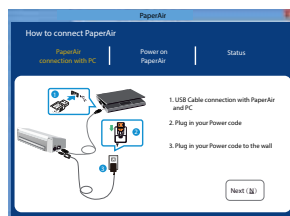
What to do
with
piles of paper?



PaperAir Manager

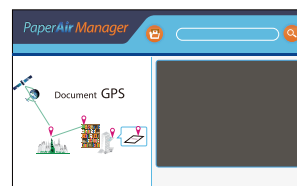
Easy Installation

Installation is easy as a breeze by following our graphic and step-by-step installation & problem solving guide.



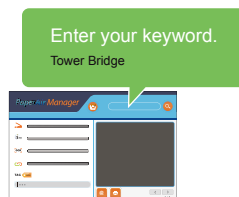
Easy Scan

Simply load your paper to the scanner, the scanning application will be automatically launched. Just choose and press one button and the job is done!



Easy Search

Documents can be searched by content, tag, file name over different file formats including jpeg, PDF, Microsoft Word, Powerpoint, Excel.



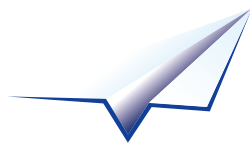
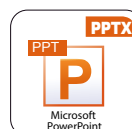
Enter your keyword(s), e.g. Shipping...



Choose the selected document

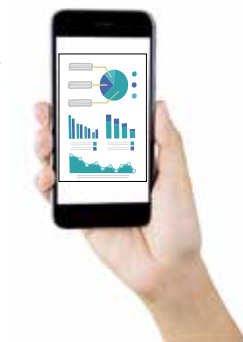
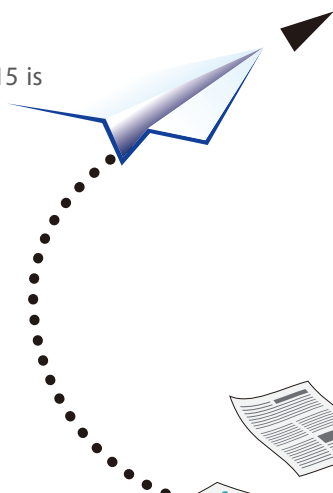
Easy Destination

You can easily choose the predefined destinations including E-mail, Printer, or popular cloud servers to send out your images once scanned.



Convenient mobile scanning (only PaperAir 215)

With a built-in Wi-Fi module, the PaperAir 215 is able to wirelessly connect to your mobile device and lets your mobile device directly instruct a scan and receive a scanned image.



Android



iOS



LCD screen indicates scanner status

Scanner status can be graphically or even animatedly displayed on the LCD screen for easy operation.



PaperAir 215



PaperAir 215L



Compact and Portable

At 11.8 inches wide and weighing only 1.4 kg, the Avison PaperAir 215/215L incorporates a built-in automatic document feeder (ADF) and card scanner in a compact unit. With the innovative design of a foldable automatic document feeder and a front tray, the PaperAir 215/215L is easy to travel with and lets you bring productivity of batches scanning to any workplace.



Front Loading and Front Ejecting Path

In addition to loading multiple pages from the auto document feeder, the scanner is designed innovatively with the foldable front tray to accommodate irregular sizes and weights of paper such as your paper clippings, fragile paper, or embossed cards. The straight paper path ensures consistent high image-quality and eliminates the need for clearance space behind the scanner.



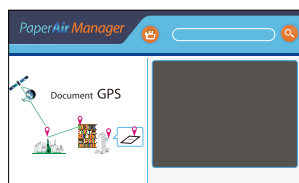
PaperAir 215/ PaperAir 215L

What we have bundled

The Avison PaperAir 215/ PaperAir 215L comes with a suite of powerful software applications that include With PaperAir Manager, you can create searchable PDFs, scan and send images to e-mail, printer, or other destinations with a simple press of a button.

Avison's PaperAir Manager

-Completes your scan with a single step



Presto! BizCard



BizCard provides a full range of contact management functions for adding business cards without typing. Use the BizCard recognition system to scan business cards, edit, and synchronize the information to the most

frequently used personal database functions for adding business cards without typing. Use the BizCard recognition system to scan business cards, edit, and synchronize the information to the most frequently



- Easily synchronize contact information to cloud storage accounts, PDA, or PIM



- Intuitive and simple user interface for

PaperAir 215



PaperAir 215L
(Only Power Button)



Specifications	PaperAir 215/ PaperAir 215L
Paper Feeding:	ADF 20-page capacity
Scanning Technology:	Contact Image Sensor (CIS)
Document Size:	Min. 50 x 50 mm Max. 216 x 356 mm
Scanning Speed:	20 PPM / 40 IPM (Color, A4, 200 dpi) 15 PPM / 30 IPM (Color, A4, 300 dpi)
Paper Thickness:	(ADF) 50~105 g/m ² (13~28 lb.) (Front Feeder) 27~413 g/m ² (7~110 lb.)
ID Card Thickness:	Up to 1.25 mm (Front Feeder)
Optical Resolution:	600 dpi
Output Resolution:	200, 300, 400 and 600 dpi
Output Formats:	B/W, greyscale, 24-bit color
File Formats:	Searchable PDF, JPEG, DOCX, XLSX, PPTX
Bundled Software:	Avison PaperAir Manager Presto! BizCard
Interface	USB 2.0 (Micro USB Port)
Power Supply:	Input: 100-240 VAC, 50/60 Hz Output: 24V, 1.5A
Power Consumption:	Operation: <24 W Ready: <7.5 W Sleep: <2.5 W Off: <0.32 W
Environmental Factors:	Operating temperature: 10°C to 35°C (50°F to 95°F) Operating humidity: 10% to 85%
Dimensions (W x D x H):	299 x 104 x 74 mm
Weight:	1.4 kg
Recommended Daily Scanning Volume:	1,000 sheets
Multi-feed Detection:	Ultrasonic Sensor (only PaperAir 215)

* The search function is not included in the mobile application.

System Requirements

CPU:	Intel® Core i3 (2.1GHz) or Higher
Memory:	1GB (32bit Windows) 2GB (64bit Windows)
DVD-ROM:	DVD ROM Drive
USB:	USB2.0 Port (USB 3.0 Compatible)
Windows Operating System:	Windows XP/Vista, 7, 8.X, 10 (32 & 64 bit)

Contents

Scanner
Power Supply
Quick Guide
USB 2.0 Cable
CD-ROM includes:
-Avison PaperAir Manager
-Presto! BizCard

Function and Package List

Model	PaperAir 215	PaperAir 215L
Function		
Ultrasonic	YES	NO
Wi-Fi	YES	NO
Adapter	Adapter	Adapter

We have endeavored to ensure that the information in this manual is accurate and that Avison is not responsible for printing or typographical errors. The above configuration is for reference only. The actual configuration (software, hardware) should be complied with the specification described in the purchase agreement. Avison Inc. owns the intellectual property rights of the product, trademark and design and the product outside and design are subject to change. Avison reserves the right to change the product without notice. The product is for reference only and Avison does not warrant these products nor is responsible for the efficiency or use of these products.



240.215.0224 U.S.
www.thecrowleycompany.com
Join Us! @crowleyscans
f t i n p y