

OS Q2

The new dimension of scanning



 **ZEUTSCHEL**
Cultural Heritage is our Passion

OS Q2

The new dimension of scanning

The OS Q Scanner Generation is the result of new technological developments as well as our consistent work on technical innovations. It fulfills the highest demands under the headings of image quality, process efficiency and productivity.

The unique image quality of the OS Q is based on the perfect interplay of especially high-quality technical components. Thus, the image quality of the OS Q extends far beyond the requirements of all common digitalization standards, e.g. ISO 19264-1, Metamorfoze or FADGI.

The scanning system features a completely new and self-developed camera system based on a CMOS sensor. The camera features a high

dynamic range and is also capable of reproducing the finest gradations. The result: sharp, low-noise, high-contrast images which reflect even the finest details true to the original.

A special guided lighting of the LED lighting system with a constant angle enables the OS Q to reproduce even difficult originals free from reflection or shadowing. Reflections on shining surfaces or shadows in the book fold are optically corrected.

A CRI value of over 97 combined with optimally matched camera and lighting components enable excellent color rendering.

The OS Q sets the reference mark for high scanning productivity.

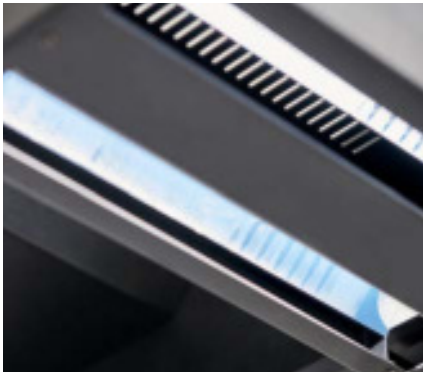
The OS Q Scanner series achieves the highest efficiency in the scanning process through the perfect interplay with tried and tested Zeutschel imaging systems. Functions such as self-opening glass panes, sliding self-balancing book supporting plates and a scanning automatic system ensure the highest productivity levels.

The OS Q Overhead Scanner is designed as a flexible modular system. If the requirements and tasks increase, it can be expanded in a modular way.



Compliant to

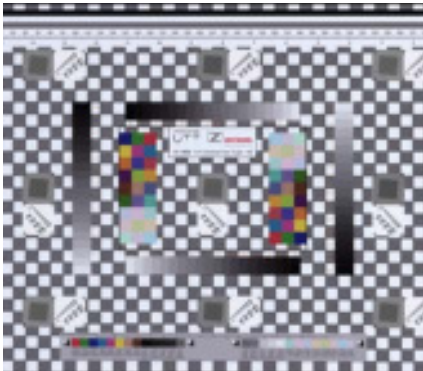
ISO 19264-1 Level A
FADGI 4 Star
Metamorfoze Full



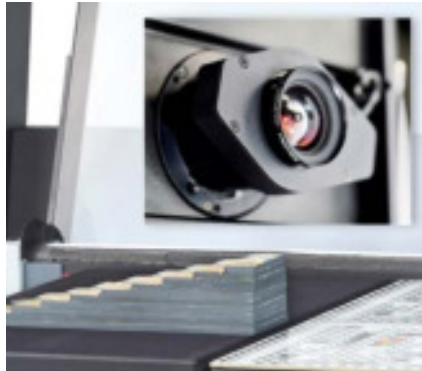
LED lighting system for reflection-free and shadow-free results



Camera system based on a CMOS sensor



Fulfills ISO 19264-1 Level A, Metamorfoze Full and FADGI 4 Star



High depth of focus - electronically adjustable aperture



Perfect interplay between high-quality technical components



Various book holders optionally available

Product advantages

- RGB line sensor (3-channel, CMOS technology)
- Resolution of up to 600 ppi
- Fulfills ISO 19264-1 Level A, Metamorfoze Full and FADGI 4 Star
- Internal image processing with 96 bit
- Data output in 48 bit/24 bit color, 16 bit/8 bit grayscale and 1 bit b/w
- True RGB capture on each pixel (no color interpolation)
- Color rendering index (CRI) of LED lighting >97
- True parallel scanning
- Camera Link interface for fastest image transfer
- Variable exposure times and aperture settings
- OmniScan software with 48 bit data output
- Line focused illumination for glare-free operation
- Fastest scanning speed
- Perfect Book – 3D scan technology for perfect book fold correction
- Parallel scanning and saving process based on 64 bit technology and multi-threading
- Bi-directional scanning
- High productivity based on ROI scan function (limitation of the area to be scanned)
- Color rendering corresponds to the original
- No UV/IR radiation
- No reflections with high-shine originals
- Ergonomic work method for the highest quality demands – with or without glass plate

Technical data

OS Q2

Camera sensor	RGB line sensor (3-channel, CMOS technology)
Resolution	MeanMTF10 at 600 ppi: 12 lp/mm
Camera system	wear-free mechanical shutter, variable exposure time, electronically adjustable aperture; automatic white and black balance, variable depth of focus
Max. original size	> DIN A2
A2+ size Advanced Plus book cradle	635 mm × 460 mm / 25" × 18"
Max. book thickness under glass plate	150 mm / 5.9"
Scan mode	96 bit color
Scanning speed (from start to end of scanning process) in A2	approx. 3 sec @ 400 ppi approx. 5 sec @ 600 ppi
Scanner interface	Camera Link
Electrical data / safety	
Voltage	110–240 V
Frequency	50–60 Hz
Max. consumption	440 W
Safety inspections / authorizations	<ul style="list-style-type: none"> - Authorization in accordance with the IEC agreement (international authorization for the safety of IT products – includes EMC, electrical safety, device safety for CE, UL, ETL, CSA) - LEDs tested in accordance with: IEC 62471:2006 "Photobiological safety of lamps and lamp systems"
Dimensions	
Width	1046 mm / 41.18"
Depth	1700 mm / 66.93"
Height	1625 mm / 63.98"
Footprint (depth × width)	1116 mm × 1046 mm / 43.93" × 41.18"
Recommended working conditions	<ul style="list-style-type: none"> - Temperature range: 18–35°C - Relative air humidity, non-condensing: 80 %
Operating system	
Operating system	Windows 10 (64 bit)
Scanning software	min. OmniScan 12.12 64 bit

Technical changes reserved



240.215.0224 U.S.

www.thecrowleycompany.com

Join Us! @crowleyscans

