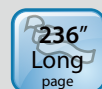
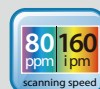




A Fast, Reliable and Easy-to-use Scanner



Features:

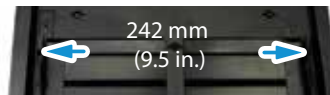
- Fast, 80 ppm / 160 ipm scanning in color, grayscale and monochrome (300 dpi, A4)
- Max. document width up to 9.5 in. (242 mm)
- Robust 100-page automatic document feeder
- Latest USB 3.1 Gen 1 connectivity for faster transmission speed
- Reverse roller technology delivers outstanding feeding reliability
- Hard and embossed card scanning up to 1.25 mm in thickness
- Press and scan to cloud servers via the bundled software Button Manager V2
- Earth-friendly LED technology
- Long page scanning up to 6000 mm (236 in.)
- Auto power off setting

Overview

Built-in with the cutting-edge image processing engine and USB 3.0 connectivity, the Avison AD280 breaks new ground in scanning performance by offering a blazing duplex scanning speed of up to 160 images per minute in Color, Grayscale, and Monochrome. Combining paper protection and reverse roller technologies, the AD280 balances high performance with exceptional feeding reliability across a wide variety of scanning situations.

Max. document width up to 9.5 in. (242 mm)

The AD280 boasts a unique and innovative design in comparison with its predecessors - the ability to accommodate form document width up to 242 (9.5 in.).



Paper Protection Technology

The advanced Paper protection technology protects valuable paper from being wrinkled or torn by halting the scan process once a skewed page is detected.

Reverse Roller Enhances Feeding Reliability

Designed with the innovative reverse roller for advanced paper separation capability, the AD280 delivers outstanding feeding reliability and operating productivity by effectively reducing the risk of a multi-feed or paper jam.



A Large LCD Display

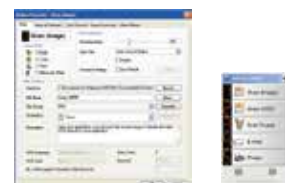
The AD280 is easy to use through the enhanced LCD display which allows 128 x 32 dots (16*4 characters). By selecting your destination and pressing the "Scan" button, the scan can be done and the scanned image can be sent to your specified destination application such as e-mail, printer, or your favorable image-editing software application.

What We Have Bundled

The AD280 come with TWAIN and ISIS drivers, and are bundled with a suite of powerful software applications that include Avison Button Manager V2, AVScan X and Nuance PaperPort SE 14.

Avison's Button Manager V2

Completes your scan with a single step



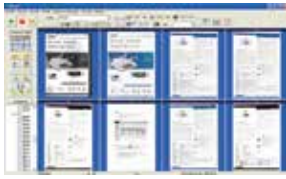
The Button Manager V2 main screen

Button Manager V2 makes it easy for you to scan and send your image to your favorite destinations with a press one button. Now the new version comes with an innovative feature to let you scan and automatically upload the scanned document to popular cloud repositories such as Google Docs, Microsoft SharePoint, or FTP. In addition, the iScan feature allows you to insert the scanned image or recognized text after optional OCR (Optical Character Recognition) process to your text editor such as Microsoft Word to get your job done easily and quickly.

Avison | AD280 Sheetfed Scanner

AVScan X

The Intelligent Document Management Tool



The AVScan X main screen

Nuance PaperPort SE14

The Professional Choice to Organize and Share Your Documents



The PaperPort SE14 main screen

Avison Network Box Scan APP



Network Box APP main screen

Document Imaging is the very first step of Document Management. However, poor quality images can cause serious problems to later indexing or storing processes. It may increase scanning labor costs and lowers the OCR accuracy. AVScan X ensures all documents are checked and polished at the time they are scanned such that the image quality is guaranteed before they are ready to use for other purposes.

AVScan X is an intelligent scanning and electronic filing solution. AVScan X possesses distinct features that convert and index scanned information into electronic documents for easy storage and fast retrieval.

PaperPort SE 14 is Nuance's most popular scanning and document management solution, carefully designed specifically for home office use. Part traditional file cabinet, part digital-document desktop, PaperPort SE 14 is the fastest and easiest way to scan, share, search and organize your documents. Additionally, PaperPort SE 14 now delivers anytime-anywhere access to your most important files however it's convenient for you – using a PC, Mac, iPhone, iPad, or Android device.

By connecting the scanner to Avison's newly designed Network Box (optional), the scanner can be upgraded into a wired or wireless scanner to let other computers or smartphones/ tablets to scan and receive image data directly from the scanner in the LAN. Avison Network Box Application (MB APP)

To let your mobile devices instruct to scan and receive the scanned image, you need to install the mobile app – MB APP to your smart phones or tablets. The MB APP can be purchased for free from an application store such as Google Play, Apple APP store. Simply press the [Start scan] button, the scanner begins scanning the document and the thumbnail image will be displayed.



PAPERPORT SE 14



Avison Button Manager V2

AVScan X



TWAIN



SMART image



Windows 7 Compatible



ENERGY STAR



(Optional)

AD280 Specifications

Paper Feeding:	ADF 100-page capacity
Scanning Technology:	Color Charged-Coupled Device
Light Source:	LED
ID Card Thickness:	Up to 1.25 mm
Long Page Mode:	200 dpi: 6000 mm (236 in.) 300 dpi: 5540 mm (218 in.) 600 dpi: 1500 mm (59 in.)
Scanning Size:	Max. 216 x 356 mm (8.5 x 14 in.) (Paper width up to 242 mm (9.5")) Min. 50 x 50 mm (1.96 x 1.96 in.)
Scanning Speed:	80 PPM/160 IPM (300 dpi, A4, color)
Paper Thickness:	27 ~ 413 g/m ² (7 to 110 lb.)
Optical Resolution:	600 dpi
Output Resolution:	75, 100, 150, 200, 300, 400 and 600 dpi
Output Formats:	B/W, greyscale, 24-bit color
File Formats:	BMP, PNG, GIF, JPEG, PDF, Searchable PDF Multi-Page TIFF, TIFF, RTF, TXT, XPS, DOC, XLS, PPT, DOCX, XLSX, PPTX, HTML.
Bundled Software:	Avison Button Manager V2 Avison AVScan X, Nuance PaperPort SE 14
Interface/Drivers:	USB 3.1 Gen 1 / TWAIN, ISIS, WIA
Power Supply:	Input: 100~240 VAC, 50/60 Hz Output: 24V, 2A
Power Consumption:	Operation: < 48 W Ready: < 16 W Sleep: < 1.2 W Off: < 0.22 W
Environmental Factors:	Operating temperature: 10°C to 35°C (50°F to 95°F) Operating humidity: 10% to 85%
Acoustic Noise:	Operation: < 55 dB Ready: < 45 dB
Dimensions (W x D x H):	Max.: 316 x 680 x 239 mm (12.4 x 26.8 x 9.4 in.) Min.: 316 x 191 x 168 mm (12.4 x 7.5 x 6.6 in.)
Weight:	4.7 kg (10.3 lb.)
Recommended Daily Scanning Volume:	11,000 Sheets
Multi-feed Detection:	Ultrasonic Sensor

We have endeavored to ensure that the information in this manual is accurate and that Avison is not responsible for printing or typographical errors. The above configuration is for reference only. The actual configuration (software, hardware) should be compiled with the specification described in the purchase agreement. Avison reserves the right to the interpretation of the actual configuration (software, hardware) should be compiled with the specification described in the purchase agreement. Avison reserves the right to the interpretation of the actual configuration (software, hardware) should be compiled with the specification described in the purchase agreement. Avison reserves the right to the interpretation of the actual configuration (software, hardware) should be compiled with the specification described in the purchase agreement.

System Requirements

CPU:	Intel® Core 2 Duo or higher
Memory:	2 GB (32 bit Windows) 4 GB (64 bit Windows)
DVD-ROM:	DVD ROM Drive
USB:	USB 3.1 Gen 1 (USB 2.0/1.1 supported)
Windows® Operating System:	Windows® XP SP3, Vista, 7, 8.x, 10 (32 & 64 bit)

Contents

AD280 Scanner
Power Supply
Quick Guide
USB 3.1 Gen 1
CD-ROM includes:
-Scanner Driver (TWAIN / ISIS Driver)
-Avison Button Manager V2
-Avison AVScan X
-Nuance PaperPort SE 14



240.215.0224 U.S.

www.thecrowleycompany.com

Join Us! @crowleyscans

