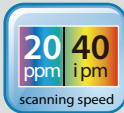


Your portable solution for batches scanning



(AD215/AD215U)

(AD215/AD215W)

Features:

- Fast scan rate up to 20 pages per minute and 40 images per minute
- 20-page Auto Document Feeder
- Front/ Rear Feeder accepts embossed card up to 1.25 mm and paper up to legal size and weight between 27 and 413 g/m²
- Auto crop and straighten a skew document
- Earth-friendly LED technology, no warming up required
- Press and scan to PDF, JPEG, BMP, or GIF file and send to e-mail, printer, image editing tool, or cloud servers like Google Drive, Microsoft SharePoint
- Bundled with useful software applications including Avison Button Manager V2, AVScan X, Nuance PaperPort
- Includes TWAIN and ISIS scanner driver
- Long page scanning: 118"
- Auto power off setting
- USB powered: No wall outlet required (only for AD215L)

Compact and Portable

At 11.8 inches long and weighting only 1.4 kg, the Avison AD215 series incorporate a built-in automatic document feeder (ADF) and card scanner in a compact unit. With the innovative design of foldable ADF and front tray, the AD215 series are easy to travel with and lets you bring productivity of batches scanning to any workplace.

Extra Portability via the USB Bus Power

(Only for AD215L)

The AD215 series come with an AC Adapter and for added mobile convenience, the scanners can be powered from the computer through the USB bus power cable.

Two Eject Paths

If your single-page document is loaded from the front or rear feeder, the scanner provides two eject paths. Document can be ejected to the opposite side or to the same side of the feeder. Switch between these paths on the TWAIN user interface and select an eject path according to your need.

*Plastic card only available for front tray feeding



Convenient mobile scanning

(Only available for AD215/ AD215W)

With an optional Wi-Fi module, the AD215 series are able to wirelessly connect to your mobile device and let your mobile device directly instruct a scan and receive a scanned image.

Easy to scan with a press of a button

With Avison's newly developed software application-Button Manager V2, the AD215 series scan both sides of a page directly to PDF, searchable PDF, JPEG, or to office applications like Word or Excel with a press of a button. The AD215 series automatically recognize the size of each document, detect and straighten for skew, and show images in their proper orientation. Plus, the scanned image can be sent directly to your specified destination including e-mail, printer, image editing software application, or even a cloud server such as Google Drive or Microsoft SharePoint.

Productive and Flexible

The AD215 series are productive at scan rate of up to 20 ppm and 40 ipm through the built-in 20-page auto document feeder and accommodate document up to 14".

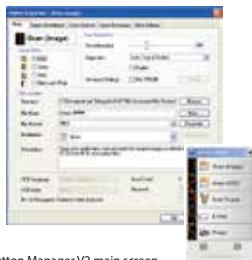
To capture high quality card image, the AD215 series also include special front and rear tray to handle plastic ID cards, driver licenses, and even embossed cards up to 1.25 mm or paper up to legal size (8.5 x 14 in.) and weight between 27 and 120 g/m².

What we have bundled

The Avison AD215 series come with TWAIN and ISIS drivers, and is bundled with a suite of powerful software applications that include Avison Button Manager V2, AVScan X, and Nuance PaperPort SE 14. With Button Manager V2, you can create searchable PDFs, scan and send images to e-mail, printer, or other destinations with a simple press of the Scan button. The AVScan X and PaperPort are highly effective image processing and document management software that helps you streamline your task more efficiently.

Avison's Button Manager V2

-Completes your scan with a single step



The Button Manager V2 main screen

AVScan X

-The Intelligent Document Management Tool



The AVScan X main screen

Nuance PaperPort SE14

- The Professional Choice to Organize and Share Your Documents



PaperPort SE 14

Button Manager V2 makes it easy for you to scan and send your image to your favorite destinations with a press one button. Now the new version comes with an innovative feature to let you scan and automatically upload the scanned document to popular cloud repositories such as Google Docs, Microsoft SharePoint, or FTP. In addition, the iScan feature allows you to insert the scanned image or recognized text after optional OCR (Optical Character Recognition) process to your text editor such as Microsoft Word to get your job done easily and quickly.

Document Imaging is the very first step of Document Management. However, poor quality images can cause serious problems to later indexing or storing processes. It may increase scanning labor costs and lowers the OCR accuracy. AVScan X ensures all documents are checked and published at the time they are scanned such that the image quality is guaranteed before they are ready to use for other purposes. AVScan X is an intelligent scanning and electronic filing solution. AvScan X possesses distinct features that convert and index scanned information into electronic documents for easy storage and fast retrieval.

Scan, Share, Search, and Organize Documents on your PC. Overwhelmed with paper? PaperPort SE 14 can help to simplify the chaos by organizing your paper documents-documents, receipts, photos, and more-into digital files on your files on your desktop. PaperPort SE 14 is Nuance's most popular scanning and document management solution, carefully designed specifically for home office use. Part traditional file cabinet, part digital- document desktop, PaperPort SE14 is the fastest and easiest way to scan, share, search, and organize your documents.



PAPERPORT SE 14



Avison Button Manager V2

AVScan X



Specifications	AD215/ AD215W/ AD215U/ AD215L
Paper Feeding:	ADF 20-page capacity
Scanning Technology:	Contact Image Sensor (CIS)
Document Size:	Min. 70 x 70 mm Max. 216 x 356 mm
Scanning Speed:	20 PPM / 40 IPM (Color, A4, 200 dpi) 15 PPM / 30 IPM (Color, A4, 300 dpi) 8 PPM / 16 IPM (Color, A4, 300 dpi USB Bus power, AD215L)
Paper Thickness:	(ADF) 27~120 g/m ² (7~31 lb.) (Front / Reat Feeder) 27~413 g/m ² (7~110 lb.)
ID Card Thickness:	Up to 1.25 mm (only available for front tray feeding)
Long Page Mode:	3000 mm
Optical Resolution:	600 dpi
Output Resolution:	75, 100, 150, 200, 300, 400 and 600 dpi
Output Formats:	B/W, greyscale, 24-bit color
File Formats:	BMP, PNG, GIF, JPEG, PDF, Searchable PDF Multi-Page TIFF, TIFF, RTF, TXT, XPS, DOC, XLS, PPT, DOCX, XLSX, PPTX, HTML.
Bundled Software:	Avison Button Manager V2, Avison AVScan X, PaperPort SE 14
Interface/Drivers	USB 2.0 / TWAIN, ISIS
Power Supply:	Input: 100-240 VAC, 50/60 Hz
Environmental Factors:	Operating temperature: 10°C to 35°C (50°F to 95°F) Operating humidity: 10% to 85%
Dimensions (W x D x H):	299 x 104 x 74 mm
Weight:	1.4 kg
Recommended Daily Scanning Volume:	1,000 sheets
Multi-feed Detection:	Ultrasonic Sensor (AD215/ AD215U)
Power Consumption:	AD215 AD215W AD215U AD215L
Operation	9.84W 9.84W 9.84W 9.12W
Ready	6.1W 6.1W 6.1W 5.88W
Sleep	2.59W 2.59W 2.59W 2.51W
Off	0.25W 0.25W 0.25W 0.42W

We have endeavored to ensure that the information in this manual is accurate and that Avison is not responsible for printing or typographical error. The above configuration is for reference only. The actual configuration (software, hardware) should be completed with the specification described in the purchase agreement. Avison is not responsible for the accuracy of the information in this manual. All rights reserved. Other company and product names mentioned in this document are trademarks of their respective companies. Wherein the third party product is for reference only and Avison does not warrant these products nor is responsible for the efficiency or use of these products.

System
CPU: Intel® Core i3 (2.1GHz) or Higher
Memory: 1GB (32bit Windows) 2GB (64bit Windows)
DVD-ROM: DVD ROM Drive
USB: USB2.0 Port (USB 3.0 compatible)
Windows® Operating System:
Windows® XP,Vista, 7, 8,X,10 (32 & 64 bit)
Contents
Scanner
Power Supply
Quick Guide
USB 2.0 Cable
CD-ROM includes:
-Scanner Driver (TWAIN / ISIS Driver)
-Avison Button Manager V2
-Avison AVScan X
-Nuance PaperPort SE 14

Function and Package List

Model	AD215	AD215W	AD215U	AD215L
Function				
Ultrasonic	YES	NO	YES	NO
Wi-Fi	YES	YES	NO	NO
Adapter/ Bus Power	Adapter	Adapter	Adapter	Adapter/ Bus Power



240.215.0224 U.S.

www.thecrowleycompany.com

Join Us! @crowleyscans

